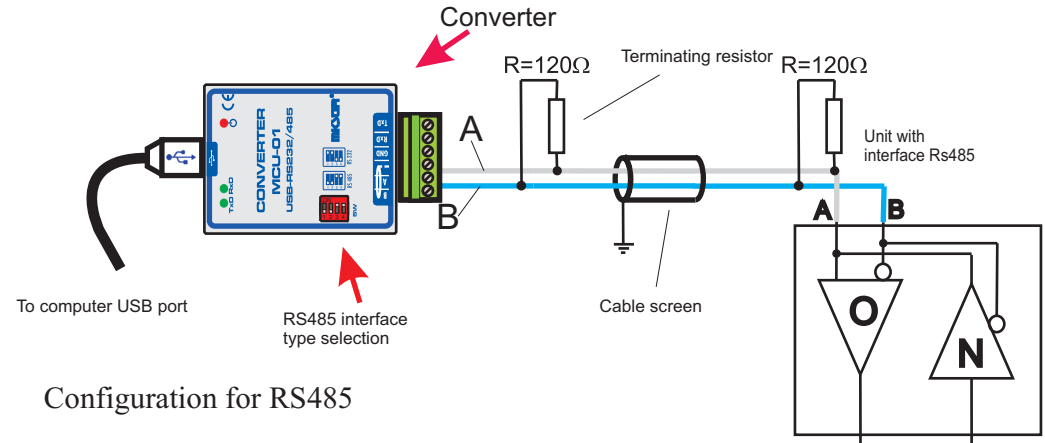
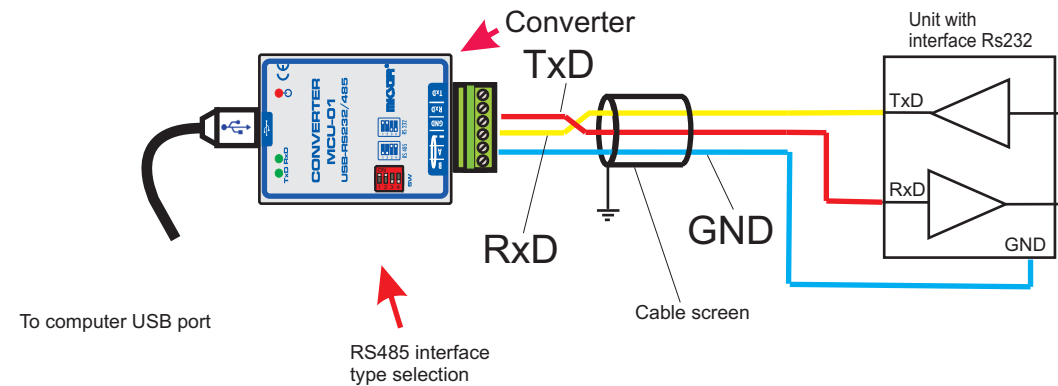


TABLE OF CONTENTS

TECHNICAL DATA.....	3
1. APPLICATION.....	4
2. CONNECTION TO COMPUTER.....	4
3. CONVERTER MCU-01 CONFIGURATION.....	5
4. CONVERTER CONTROLLER INSTALLATION.....	6
5. CONFIGURATION EXAMPLE.....	8



Maximum cable length for interface RS485 is 1200m, in case if length >50 m, connect terminating resistor 120Ω (delivered with the whole set) between terminals A and B. Maximum of 32 devices may be connected to line RS485.

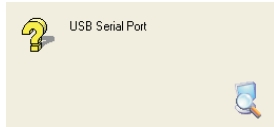


Maximum cable length for interface RS232 is 15 m.

4. CONVERTER CONTROLLER INSTALLATION

As soon as the converter has been connected to computer, the Windows XP system should display message that new hardware has been detected

Select option: **Automatic software installation, and press button "Continue"**

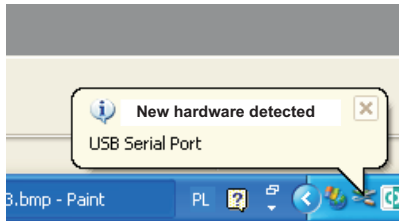


Installation Wizard searches for new hardware



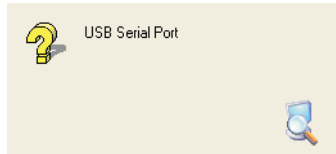
USB High Speed Serial Converter

Press "Finish" after finding new hardware



New hardware detected message will appear

Then proceed with software installation. Automatic installation option should be selected.

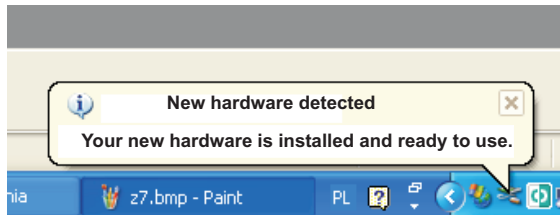


The Wizard proceeds with search



USB Serial Port

Press "Finish" as soon as the software has been installed



Installed converter will appear as serial port in the Hardware Manager

TECHNICAL DATA

HOUSING DIMENSIONS:

-76mm X 59mm

POWER SUPPLY:

- 5V(DC), THROUGH COMPUTER USB PORT

STRUCTURE:

-ONE-ELEMENT

WORKING TEMPERATURE:

--20..+70 °C

DIGITAL COMMUNICATION:

-SERIAL PORT

1 x USB (TO COMPUTER)

1 x RS-485 OR 1 x RS-232 (switching with a switch,
galvanic-insulated)

1. APPLICATION

The converter is used to change signal from the USB standard to serial signal RS-485 or RS-232. There is possibility of conversion between USB and RS-485, or USB and RS-232.

A switch is used to change conversion type. The converter is equipped with hardware system to switch-over transmission direction (for RS-485).

Computer detects the converter as an additional COM port.

2. CONNECTION TO COMPUTER

The converter is connected to computer with an USB cable, at both ends terminated with A-type pins (see figure)

ATTENTION:

Prior to connection make sure whether the USB port is activated in computer BIOS.

In case if relevant BIOS function is deactivated, after having plugged in the converter the computer will not detect new hardware and installation of controllers will be impossible.



Fig.1. USB Plug

The converter should be connected to one of computer USB ports.

ATTENTION:

When all diodes in the converter will light, disconnect and re-connect the USB cable.

The reason for this may be the USB port initialization procedure in some motherboards or Windows system.

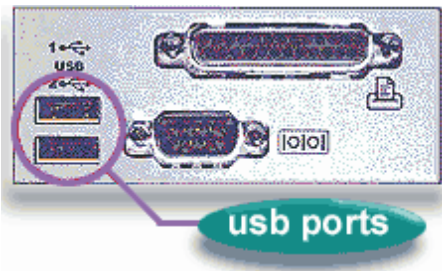


Fig.2. Computer ports layout.

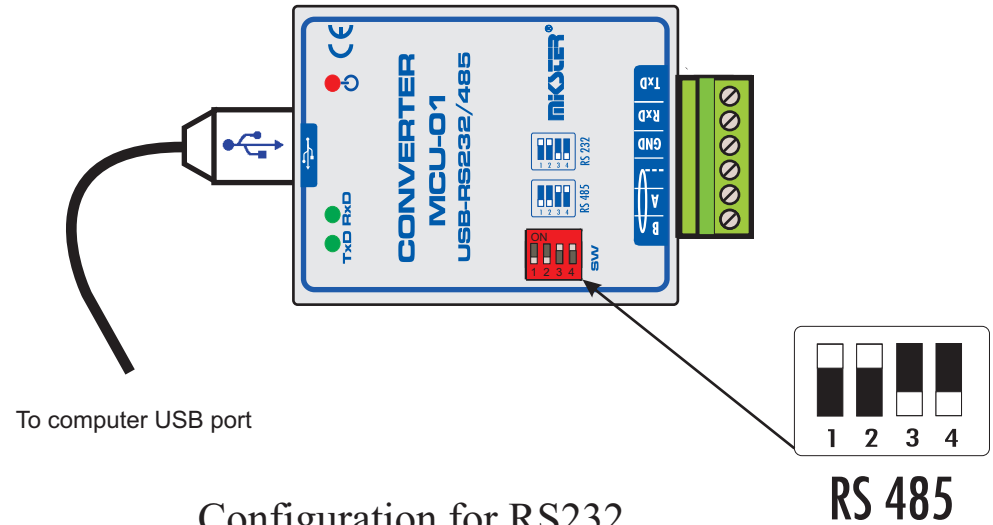
3. CONVERTER MCU-01 CONFIGURATION

Green lamp signaling that power is on should light after having connected the unit to computer.

Carry out the following configuration operations to ensure correct converter work :

- set (check) transmission rate
- set (check) conversion type setting
- check whether connections are right

Configuration for RS485



Configuration for RS232

